

# Indulge Clients and Mask Nail Flaws

Mani Sation and Attraction Pink Masque Powder



Citrus abounds in Bio Creative Labs' antioxidant-rich Mani Sation manicure system. Natural-nail and enhancement clients alike will love the invigorating, rejuvenating results they receive from the tangerine, orange, grapefruit, lemon and lime properties of the four-product system. Hand Wash cleans, softens and moisturizes; Hand Exfoliant sugar scrub rejuvenates; Hand Masque cleans and hydrates; and Hand Lotion nourishes and moisturizes skin. **For more information on Bio Creative Labs, circle 200 on the Reader Service Card, call 877/909-7334 or log on to [www.biocreativenails.com](http://www.biocreativenails.com).**

NSI created Attraction Pink Masque Powder to help nail techs provide complete nail makeovers to clients who have challenging nails. When combined with Attraction Nail Liquid and the other products in the NSI Attraction Acrylic System, the powder's unique opaque formula helps you craft enhancements that hide imperfections and create the illusion of longer nail beds. If a client has a nail-biting habit or simply has trouble growing long, strong nails, you can use Attraction Pink Masque Powder to give her the flawless, elegant nails she's always wanted. **For more information on NSI, circle 201 on the Reader Service Card, call 800/354-6741 or log on to [www.nsinails.com](http://www.nsinails.com).**

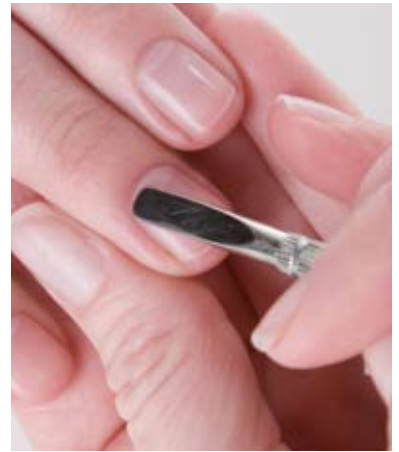
# Mani Sation



**1** Pump Hand Wash into a manicure bowl or directly onto the client's hands. Add water to the Wash and work it into a foam. Massage the Wash into the skin for one to two minutes. Rinse off the hands and pat them dry.



**2** Using a circular motion, massage a generous amount of Hand Exfoliant into the skin to remove dead skin cells, focusing on cuticles and dry patches.



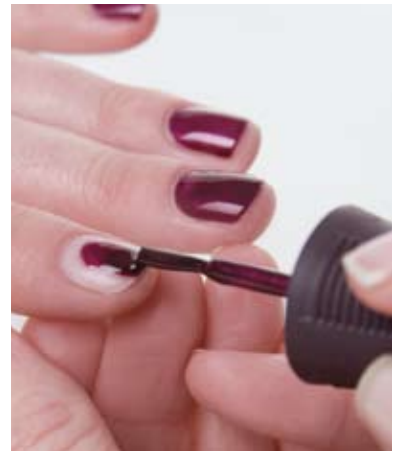
**3** Thoroughly rinse the client's hands and push back cuticles.



**4** Apply enough Hand Masque to completely cover the hands. Wrap the hands in a warm towel and allow the Masque to set for five minutes. Rinse off the Masque and pat the hands dry.



**5** Massage a small amount of Hand Lotion into your clients' hands and arms until the product is completely absorbed.



**6** Proceed with the service by completing a natural-nail manicure or enhancement application.

# Attraction Pink Masque Powder



**1** Thoroughly prep the natural nail and apply an Elation tip. Cut, file and blend the tip. Clean the nail and the tip with Nail Pure Plus, and liberally apply Attract Primer. Using Attraction Pink Masque Powder, place a bead near but not touching the cuticle. (Be sure to use a medium-wet mix ratio for each step.) Press the bead from side to side for coverage, and then pull the bead down until the product thins and takes on a grainy appearance.



**2** Place another bead of Attraction Pink Masque Powder on the middle of the nail plate, slightly overlapping the thinned product. Press the bead from side to side for coverage, and then pull the bead down to the free edge until the product thins and takes on a grainy appearance.



**3** Using Attraction Radiant White Powder, place a bead in the middle of the free edge and create the smile line. Using the tip of the brush, lightly press the white from side to side to evenly distribute the product (by using gentle pressing, pushing and guiding techniques, you can create deeper corners). Smooth the product over the free edge.



**4** Coat the entire enhancement with a thin layer of Attraction Totally Clear Powder. File and shape the nail with a 180-grit file, and then clean the nail thoroughly.



**5** Finish the nail by applying Glaze 'n Go and curing for 90 seconds with a 9-watt UV lamp. Finally, condition the cuticle with Nurture Oil.



**6** Encourage your client to maintain her new look by scheduling her next appointment. ↓

Victoria J. Schoenke is a freelance writer and editor based in Madison, Wisconsin.