

# Looking Good, Toe to Tip

DeEnterprises Callus Remover and OPI Products  
Competition Formula 3000 Ultimate White Powder



**D**eEnterprises makes it easy for you to smooth uncomfortable and unsightly calluses on your clients' feet with Callus Remover. The extra-strength formula works hard to remove calluses in minutes and is now thicker for easier application. Callus Remover comes in a one-gallon container and may be ordered in large quantities for a discounted price, so there's no need to worry about running out of this must-have pedicure product. **For more information on DeEnterprises, circle 200 on the Reader Service Card, call 800/433-4630 or log on to [www.deenterprises.com](http://www.deenterprises.com).**

New to the Competition Formula 3000 lineup from OPI Products, Ultimate White Powder will help you create dazzling, competition-worthy pink-and-whites. This advanced-formula polymer features an ultrafine texture for minimum filing and a drier application for maximum application workability and speed. The radiant white powder is also UV-stabilized, which means that your smile lines and free edges will remain bright, crisp and clear for the life of the enhancement. **For more information on OPI Products, call 800/341-9999 or log on to [www.opi.com](http://www.opi.com).**

# DeEnterprises Callus Remover



1 Soak your client's feet and prepare her for a pedicure.



2 Apply Callus Remover to calluses with gloved hands or a spatula. Leave on the feet for no longer than three to five minutes.



3 Wipe the Callus Remover from the feet with a towel.

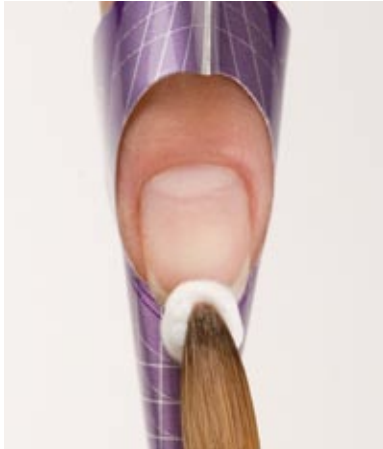


4 Gently smooth remaining calluses with a foot file.

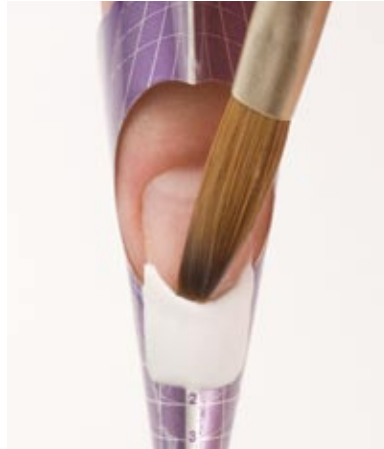


5 Rinse the feet thoroughly and pat them dry. Finish the pedicure as usual.

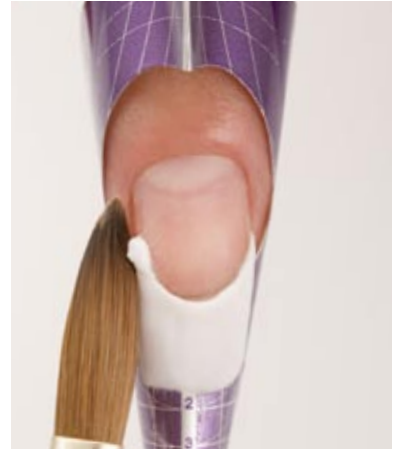
# OPI Products Competition Formula 3000 Ultimate White Powder



**1** Prep nails as usual and affix FreeForm Adhesive Nail Forms. Place a large bead of Competition Formula 3000 Ultimate White Powder on the form and begin sculpting the free edge.



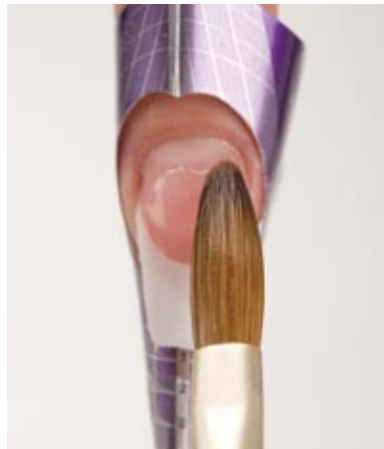
**2** Next, shape the product to form the smile line.



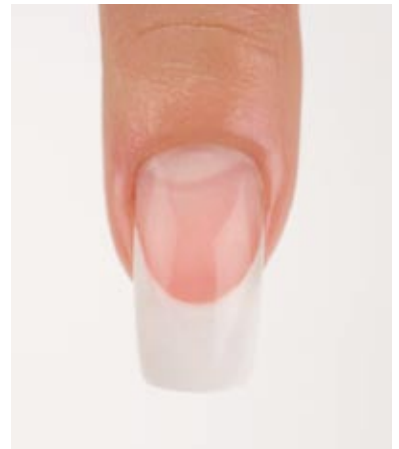
**3** Apply smaller, drier beads of Ultimate White Powder at the corner points of the smile line to deepen and reinforce it.



**4** Tilt the client's finger down slightly and place a medium ball of pink product to the base of the nail plate. Wipe off your brush immediately after placing the ball of product. Press the pink product back toward the cuticle and then stroke it out over the entire nail.



**5** Apply a medium ball of pink product to the apex of the nail, and stroke it out to create the arch and reinforce the stress area.



**6** After sculpting all of the nails, remove the forms, file and finish the enhancements as desired. ▼